

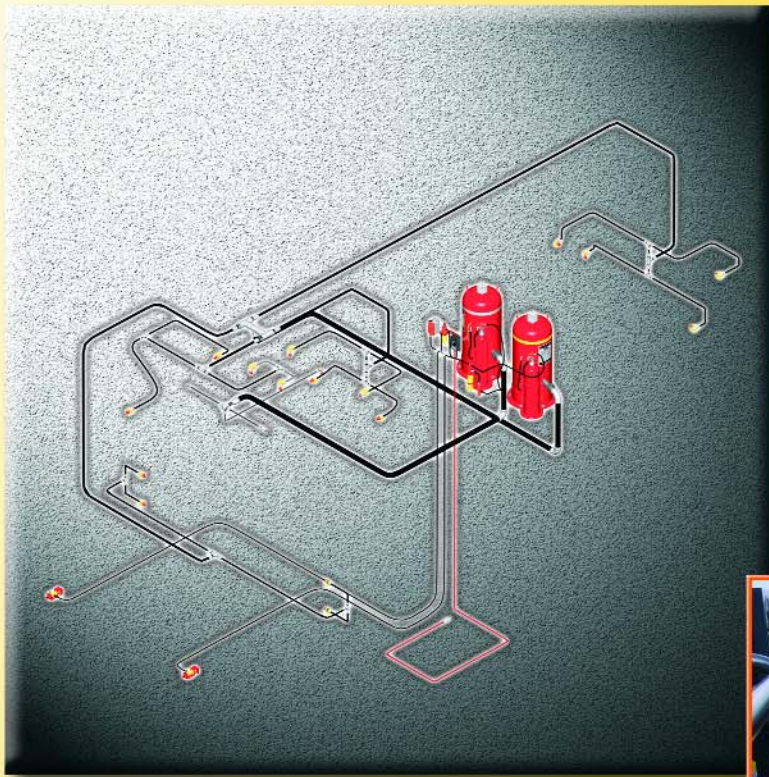
# Vehicle Fire Suppression Systems



The **ULTIMATE** Protection  
for **Mobile Equipment**.



# TWIN-AGENT TECHNOLOGY



Today's Mega-Class non-road mobile equipment requires MEGA-CLASS fire protection. Ansul twin-agent system technology provides protection to help keep equipment productive and minimize downtime due to fire.



## Features:

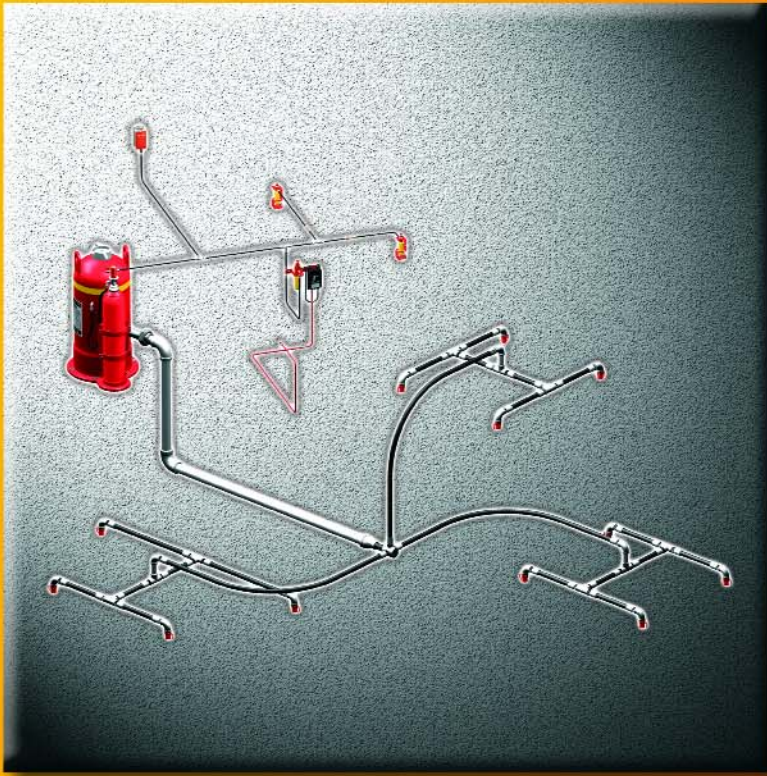
- A-101 large dry chemical capacity – 125 or 250 lb. (57/113 kg) tank
- LVS liquid agent for added cooling capability – 15 or 30 gal. (57/114 L) tank
- Maximum system flexibility
- Minimal installation and service time
- Proven cartridge-operated system providing the highest level of reliability and dependability
- CHECKFIRE SC-N detection and control system
- Supplemental SHARPEYE Triple IR detection for certain applications



## Typical Applications:

- Excavators
- Haul Trucks
- Wheeled Loaders
- Drag Lines
- Large Dozers
- Drills

# APPLICATION FLEXIBILITY



For applications where the equipment configuration calls for ample dry chemical agent, Ansul has the answer. Two large-capacity A-101 dry chemical tanks are available for protecting the medium-size class of non-road mobile equipment. LVS liquid agent is a recommended option for added cooling capability.

## Features:

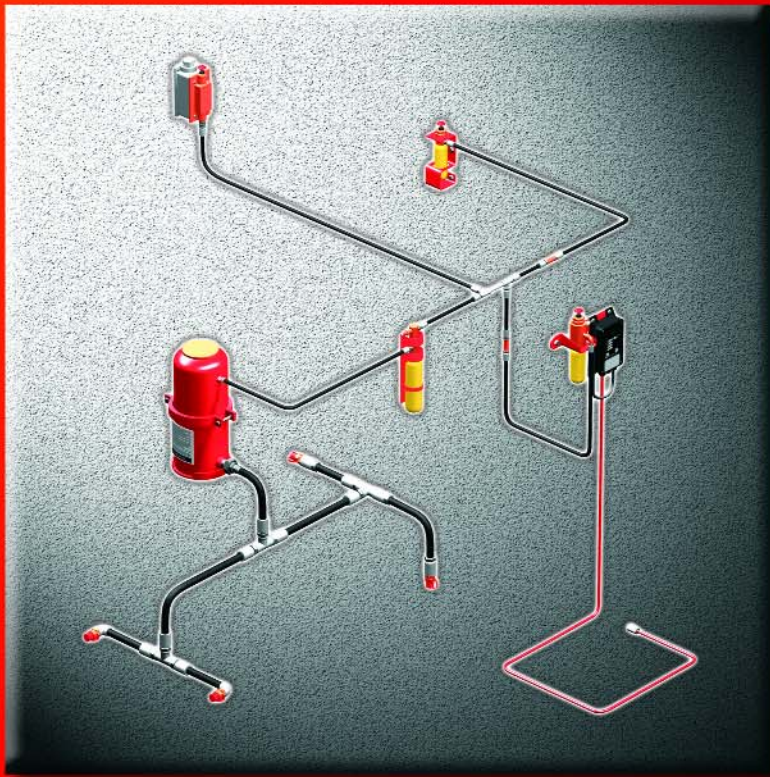
- 125 or 250 lb. (57/113 kg) dry chemical tank
- LVS liquid agent option can be added as required
- Minimal installation and service time
- Footprint utilizes minimal deck space
- Proven cartridge-operated system providing the highest level of reliability and dependability
- CHECKFIRE SC-N detection and control system



## Typical Applications:

- Dozers
- Scrapers
- Graders
- Cranes
- Drills
- Slag Pot Carriers
- Compactors

# THE ORIGINAL



The original A-101 and LT-A-101 vehicle fire suppression systems have been on the job since the 1960s providing fire suppression capability on smaller equipment often found in non-road, over-the-road and underground mining applications.

## Features:

- 10, 20 and 30 lb. (4.5/9.0/13.6 kg) dry chemical tank sizes
- Low profile tanks for underground mining and other constrained space applications
- Offered in standard, extreme temperature, and low profile versions
- Proven cartridge-operated system providing the highest level of reliability and dependability
- CHECKFIRE SC-N for above ground detection and control and the CHECKFIRE MP-N (*mine permissible*) for underground application



## Typical Applications:

- *Underground Mining Equipment*
- *Trash Haulers*
- *Small Dozers*
- *Front End Loaders*
- *Forestry*
- *Agriculture*

*When every second counts, you can be assured Ansul Vehicle Fire Suppression Systems and Detection and Control Systems are ready to respond. Ansul Systems are versatile, regardless of the vehicle type, size, or environment. From underground mining equipment where space is at a premium, to "Mega-Class" non-road mobile equipment used in today's open mining environments, Ansul brand systems and RED LINE® extinguishers will be there 24/7 to protect your investment.*

Until the 1960s, mine owners and operators had to depend on hand portable extinguishers for the protection of mining vehicles. Recognizing the need for an advanced system that would raise the level of both safety and fire suppression, Ansul worked hand-in-hand with the non-road vehicle industry to develop the most advanced and effective fire suppression system. As a result of this effort, the A-101™ Dry Chemical Vehicle Fire Suppression System was born.

Ansul has continually made efforts to improve upon an already effective system and has "raised the bar" to meet the needs of an ever-changing industry. The results of these efforts have been the introduction of the following fire suppression innovations.



- **A-101™ Dry Chemical Vehicle Fire Suppression System:**  
The original.
- **LT-A-101 Dry Chemical Fire Suppression System:**  
Expanded the capabilities of the A-101 system for extreme low temperature environments: -65° to 210° F (-54° to 99° C).
- **LP-LT-A-101 Low Profile Vehicle Fire Suppression System:**  
Designed for underground mining.
- **LVS™ Liquid Agent Fire Suppression System.\***  
Designed as a secondary system to cool fire affected surfaces after the LT-A-101 has suppressed a fire.
- **LT-A-101/LVS Twin Agent Fire Suppression System:**  
The ultimate in vehicle fire suppression technology providing a one-two punch that both knocks a fire down and cools affected surfaces to prevent fire re-flash.
- **CHECKFIRE® Detection and Control Systems:**  
Dependable detection and control including standard and mine permissible CHECKFIRE controllers used in conjunction with thermal linear or spot detection.
- **Triple IR Flame Detection:\*\***  
The newest technology used to detect a specific infra-red spectrum emitted by fires. Used as a complement to existing thermal detection devices.

\*Not intended for use as a stand alone system; to be used in conjunction with the LT-A-101 Dry Chemical Fire Suppression System.

\*\*Designed as a secondary method of detection used in tandem with thermal linear or spot detection.

## SharpEye™ 20/20 Triple IR Detector

In addition to standard linear and thermal spot detection, Ansul offers the latest in infra-red (IR) flame detection technology.

### Features:

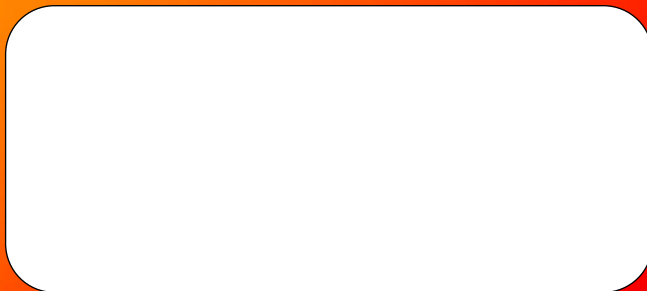
- Highly immune to false alarms
- Sensitivity selection
- Automatic built in test (BIT)
- RS485 compatible
- FM approved
- Small size for installation in tight areas
- Two to three times the detection distance of conventional IR detectors
- 100° field of vision



*For worldwide sales offices & manufacturing locations, visit:*

[www.ansul.com](http://www.ansul.com)

Distributed by:



## CHECKFIRE® Detection

The CHECKFIRE electric detection and actuation system provides 24-hour protection of equipment. Its unique design allows either manual or automatic pneumatic actuation of the fire suppression system.

### Applications:

- **CHECKFIRE SC-N**
  - Non-road mobile mining vehicles and equipment in conjunction with A-101 vehicle fire suppression systems
- **CHECKFIRE MP-N**
  - Designed and particularly suited for use in underground mining environments

### Features:

- **CHECKFIRE SC-N**
  - FM approved
  - Built-in diagnostic function
  - Field programmable circuits
  - Programmable time delays
  - Vibration and shock resistant design
  - Electronic circuitry that meets IEC standards for electromagnetic compatibility
- **CHECKFIRE MP-N**
  - MSHA approved for gas motor application
  - Thermal linear and spot detection options
  - Tamper-proof screws on front cover
  - Programmable time delays
  - Vibration and shock resistant design



*Contact your local Ansul Distributor...*

*Or call:*

**1-800-TO-ANSUL**

(USA/CANADA)

**1-715-735-7411**

(International)

Fax: **1-715-732-3608**



*Innovative Fire Solutions*

ISO 9001 Registered

*ANSUL, RED LINE, A-101, LVS, and CHECKFIRE are trademarks of Ansul Incorporated or its affiliates. SHARPEYE is a trademark of Spectrex Inc.*

**Tyco Safety Products**  
One Stanton Street  
Marinette, WI 54143-2542